



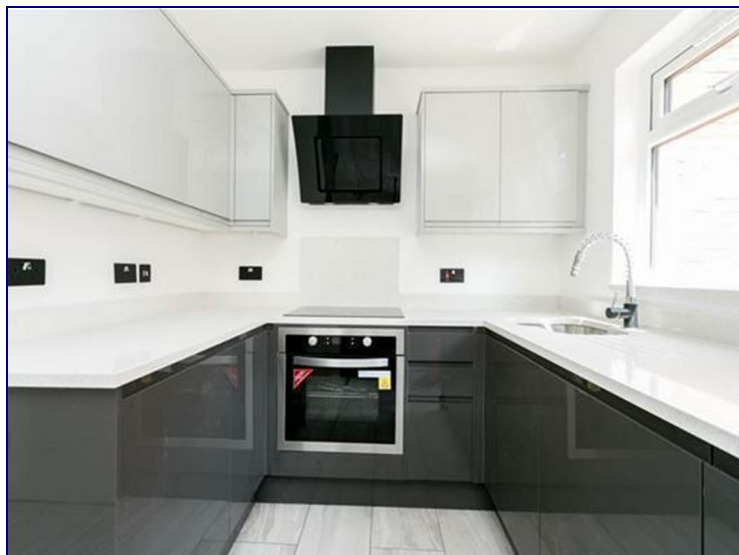
[www.kings-group.net](http://www.kings-group.net)

488 Bethnal Green Road

London E2 0EA

Tel: 0207 613 2121

**Evelyn Denington Road, London, E6 5XY**



**£1,700 Per Month**

This excellent two bedroom HOUSE has been wonderfully constructed. Comprising TWO double bedrooms with fitted wardrobes, a stylish bathroom with amazing lighting and a wonderful /kitchen room featuring sleek white cabinetry, wood flooring and a private balcony. Offers easy access to Stratford and the City and many local amenities. CALL NOW TO AVOID DISAPPOINTMENT!!! PARKING INCLUDED!!!



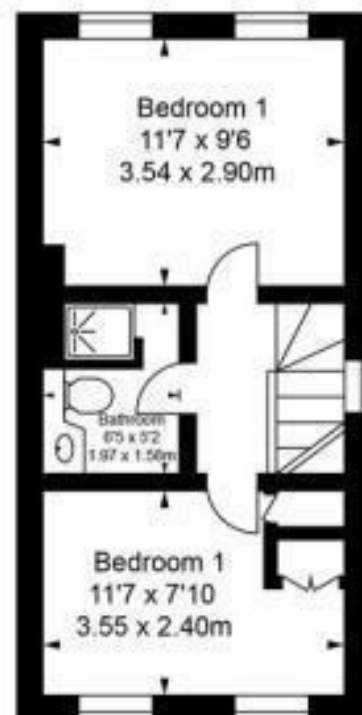


# Fleetwood Court, E6

Approximate Gross Internal Area :-  
 Ground Floor :- 31.33 sq m / 337 sq ft  
 First Floor :- 27.25 sq m / 293 sq ft  
 Total :- 58.58 sq m / 630 sq ft



**Ground Floor**



**First Floor**

Illustration for identification purposes only, measurements are approximate, not to scale.  
 floor plan by: [www.creativeplanetitk.com](http://www.creativeplanetitk.com)

Energy Efficiency Rating		
	Current	Potential
Very energy efficient - lower running costs		
(92 plus) <b>A</b>		
(81-91) <b>B</b>		
(69-80) <b>C</b>		
(55-68) <b>D</b>		
(39-54) <b>E</b>		
(21-38) <b>F</b>		
(1-20) <b>G</b>		
Not energy efficient - higher running costs		
<b>England &amp; Wales</b>	EU Directive 2002/91/EC	

Environmental Impact (CO <sub>2</sub> ) Rating		
	Current	Potential
Very environmentally friendly - lower CO <sub>2</sub> emissions		
(92 plus) <b>A</b>		
(81-91) <b>B</b>		
(69-80) <b>C</b>		
(55-68) <b>D</b>		
(39-54) <b>E</b>		
(21-38) <b>F</b>		
(1-20) <b>G</b>		
Not environmentally friendly - higher CO <sub>2</sub> emissions		
<b>England &amp; Wales</b>	EU Directive 2002/91/EC	